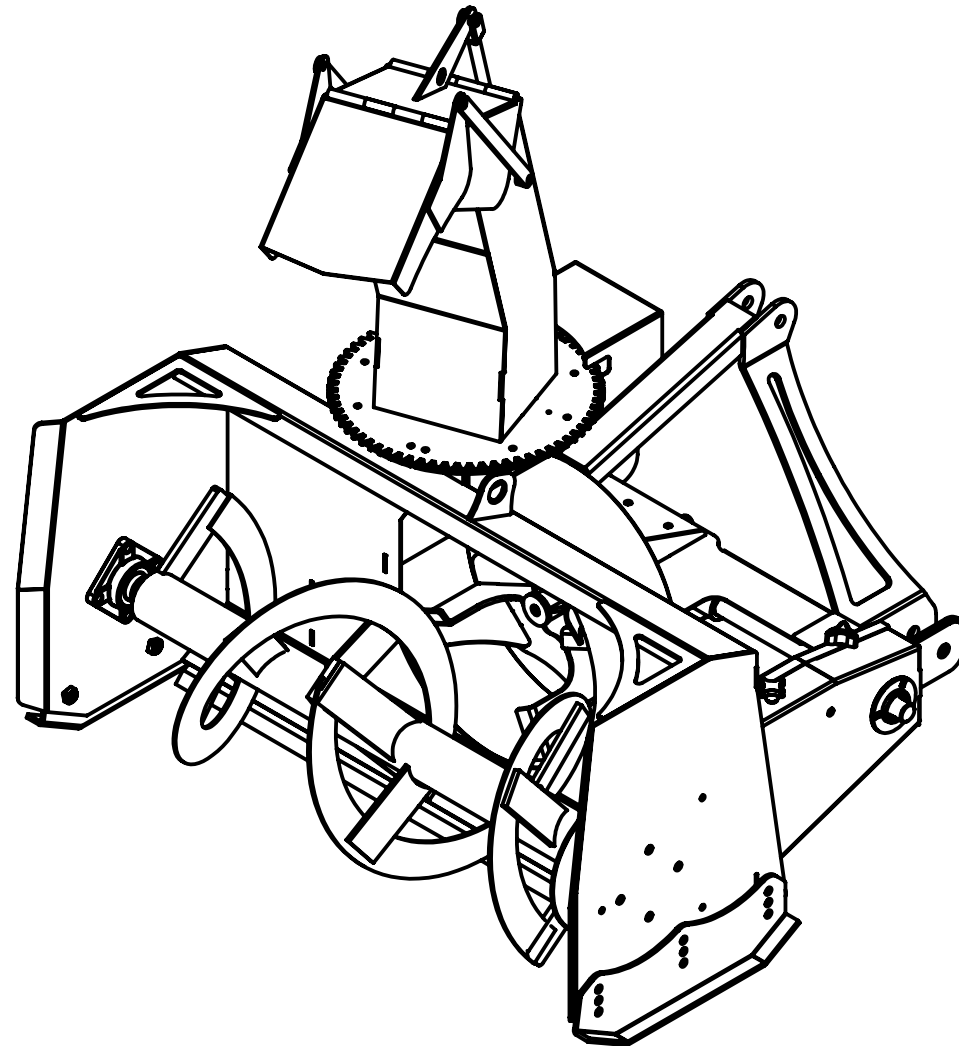


NOTES

1. MATERIAL: PER SUB-PARTS
2. BREAK SHARP EDGES AND REMOVE BURRS DETRIMENTAL TO SAFE HANDLING
3. PART TO BE FREE OF FOREIGN MATERIAL FIBERS, LOOSE BURRS, SHARP EDGES, CONTAMINANTS AND CORROSION.
4. FINISH: PARTS TO BE CLEANED, DEGREASED AND PRETREATED WITH IRON PHOSPHATE COATING PRIOR TO POWDER COATING
POWDERCOAT SUPPLIER:
COLOUR:
PART TO MEET ADHESION STANDARD ASTM D3359, LEVEL 4B OR BETTER
POWDERCOAT THICKNESS: 1.5-4 MIL
PROTECT ALL THREADS PRIOR TO POWDER COATING
5. PARTS TO BE WELDED/ASSEMBLED AND WELD NUTS INSTALLED PER MANUFACTURER'S SPECIFICATIONS



REVISION HISTORY

REV	SHT	ZONE	REASON FOR CHANGE	DATE MM/DD/YYYY	BY	CHECKED
A	1 OF 5	N/A	PRODUCTION RELEASE	01/07/2017	R. KALOCSAI	A. MARTIN

ITEM NO.	PART NUMBER	DESCRIPTION	QTY.
1	SB-40W101	MAIN FRAME	1
2	SB-40A100	CHUTE ASSEMBLY	1
3	SB-48w102	BLOWER FAN	1
4	cutting edge 46 in	CUTTING EDGE 48 IN	1
5	SB-40L142	BACKING PLATE LEFT	1
6	SB-40L143	BACKING PLATE RIGHT	1
7	SB-48s103	PLASTIC HOOD BEARING	1
8	SB-48I209	HOOD MOUNT	4
9	SB-48I210	HOOD RETAINER	2
10	SB-40W175	TENSIONER BAR ASSY	1
11	60645K361	BALL JOINT ROD END	1
12	6085K16	6085K160- CHAIN TENSIONER	1
13	3798K42	THREADED SOLID ROD END	1
14	SB-40W121	LOWER SPACER, GEARBOX	1
15	L25 Gear box	L25 GEAR BOX	1
16	SB-48w103	DRIVE SHAFT	1
17	SB-40A220	HYD MOTOR MOUNT ASSY	1
18	SB-40L141	CHAIN GUARD	1
19	2776K27	THREE-ARM KNOB WITH THREADED STUD	2
20	6663K52	IDLER SPROCKET	1
21	90201A415	CAP SCREW-GRADE 9	1
22	SB-40W150	CHAIN GUARD	1
23	SB-40W170	AUGER WELDMENT	1
24	2741T106	FINISHED-BORE SPROCKET	1
25	SBM-P-F207 BEARING	F207 BEARING & FLANGE	2
26	50-F104	SAF-205 PF Pressed flang baring 1" Bore	1

STREAMSIDE INDUSTRIES
4181 Boomer Line, RR#1
St. Clements, Ontario
NOB 2M0

ELECTRONIC SIGNATURE DOCUMENT

APPROVAL STATUS: **RELEASED TO PRODUCTION**

TITLE

46" BLOWER ASSY

UNLESS OTHERWISE SPECIFIED
DIM & TOL PER ASME Y14.5M-1994
DIMENSION ARE IN INCHES
DECIMAL TOLERANCE .X ±.1
.XX ±.01
.XXX ±.005
ANGULAR TOLERANCE ±1°
DRAFT ANGLE 2° MAX
MACHINED SURFACE
FILLET & CORNER RADII .03
DO NOT SCALE DRAWING

DRAWN BY: R. KALOCSAI DATE: 01/07/2017

THIRD ANGLE PROJECTION

INCHES

SIZE	PART NO.	DWG NO.	REV
B	46-40A100	46-40A100	A
SCALE	1:12	WEIGHT	490.69
			SHEET 1 OF 5

4

3

2

1

D

D

C

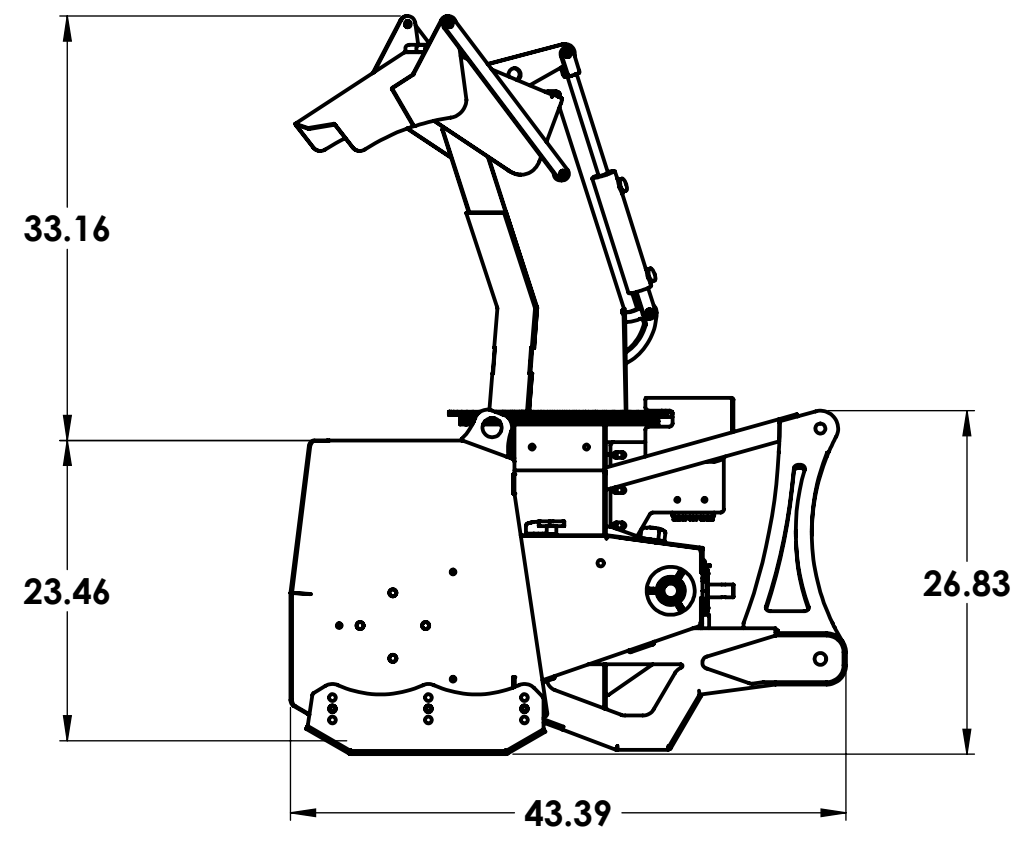
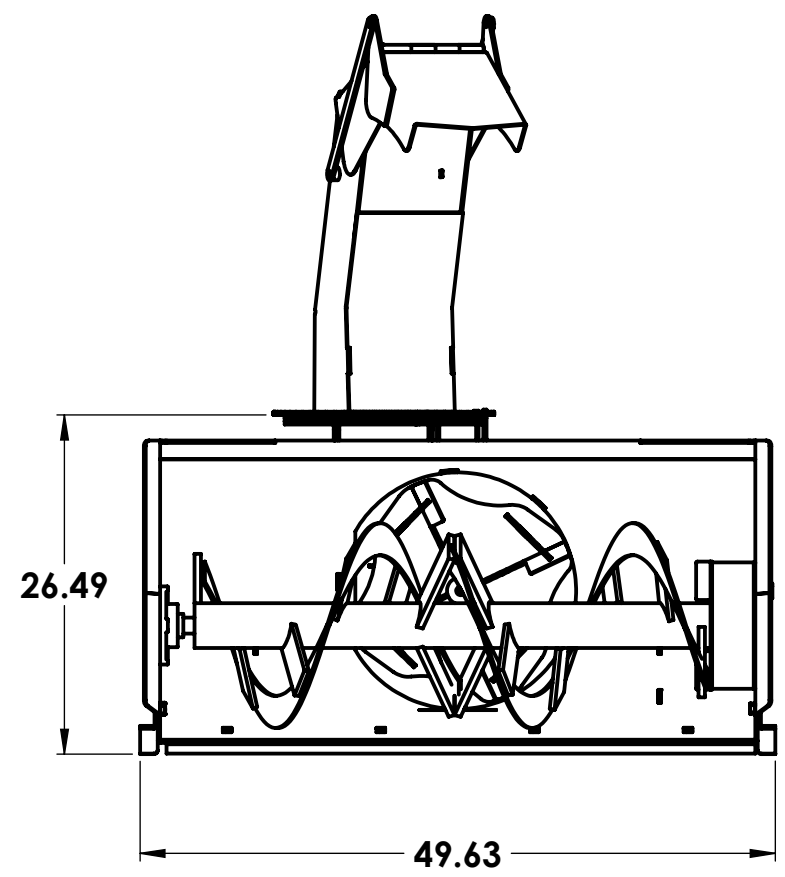
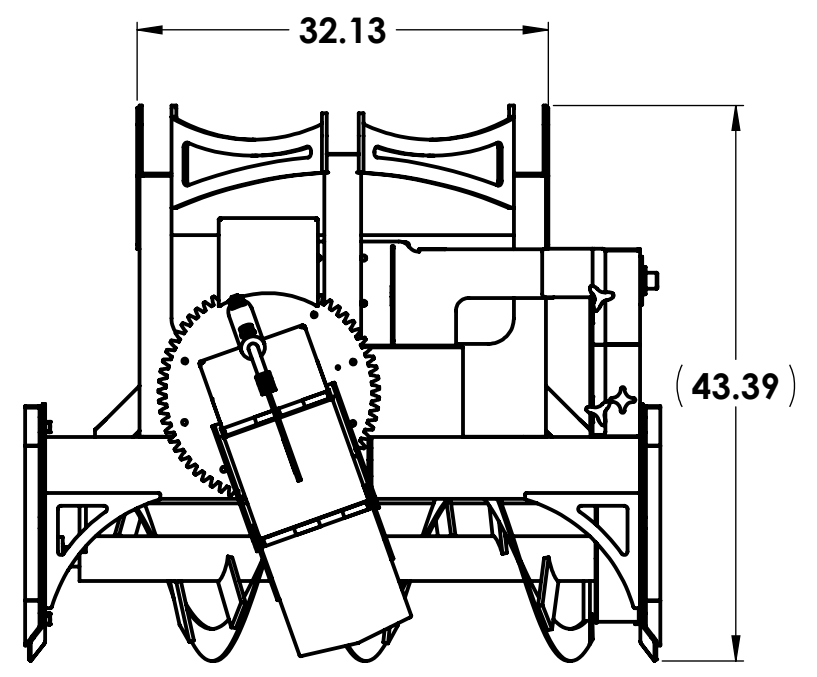
C

B

B

A

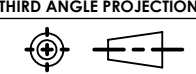
A



STREAMSIDE INDUSTRIES
 4181 Boomer Line, RR#1
 St. Clements, Ontario
 NOB 2M0

ELECTRONIC SIGNATURE DOCUMENT
APPROVAL STATUS: RELEASED TO PRODUCTION

UNLESS OTHERWISE SPECIFIED
 DIM & TOL PER ASME Y14.5M-1994
 DIMENSION ARE IN INCHES
 DECIMAL TOLERANCE
 .X ±.1
 .XX ±.01
 .XXX ±.005
 ANGULAR TOLERANCE ±1°
 DRAFT ANGLE 2° MAX
 MACHINED SURFACE
 FILLET & CORNER RADII .03
 DO NOT SCALE DRAWING

DRAWN BY: R. KALOCSAI DATE: 01/07/2017
 THIRD ANGLE PROJECTION

INCHES

TITLE			
46" BLOWER ASSY			
SIZE	PART NO.	DWG NO.	REV
B	46-40A100	46-40A100	A
SCALE	1:15	WEIGHT	490.69
			SHEET 2 OF 5

4

3

2

1

4

3

2

1

D

D

C

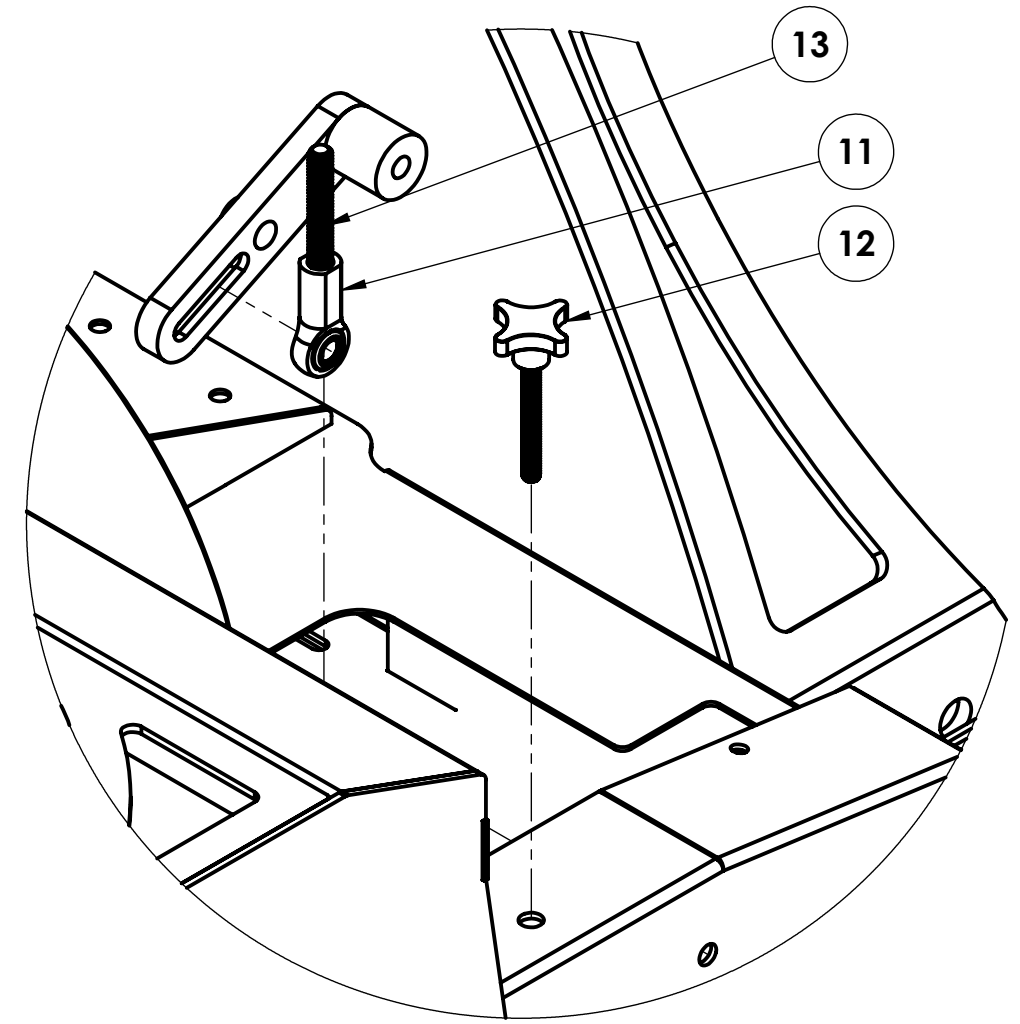
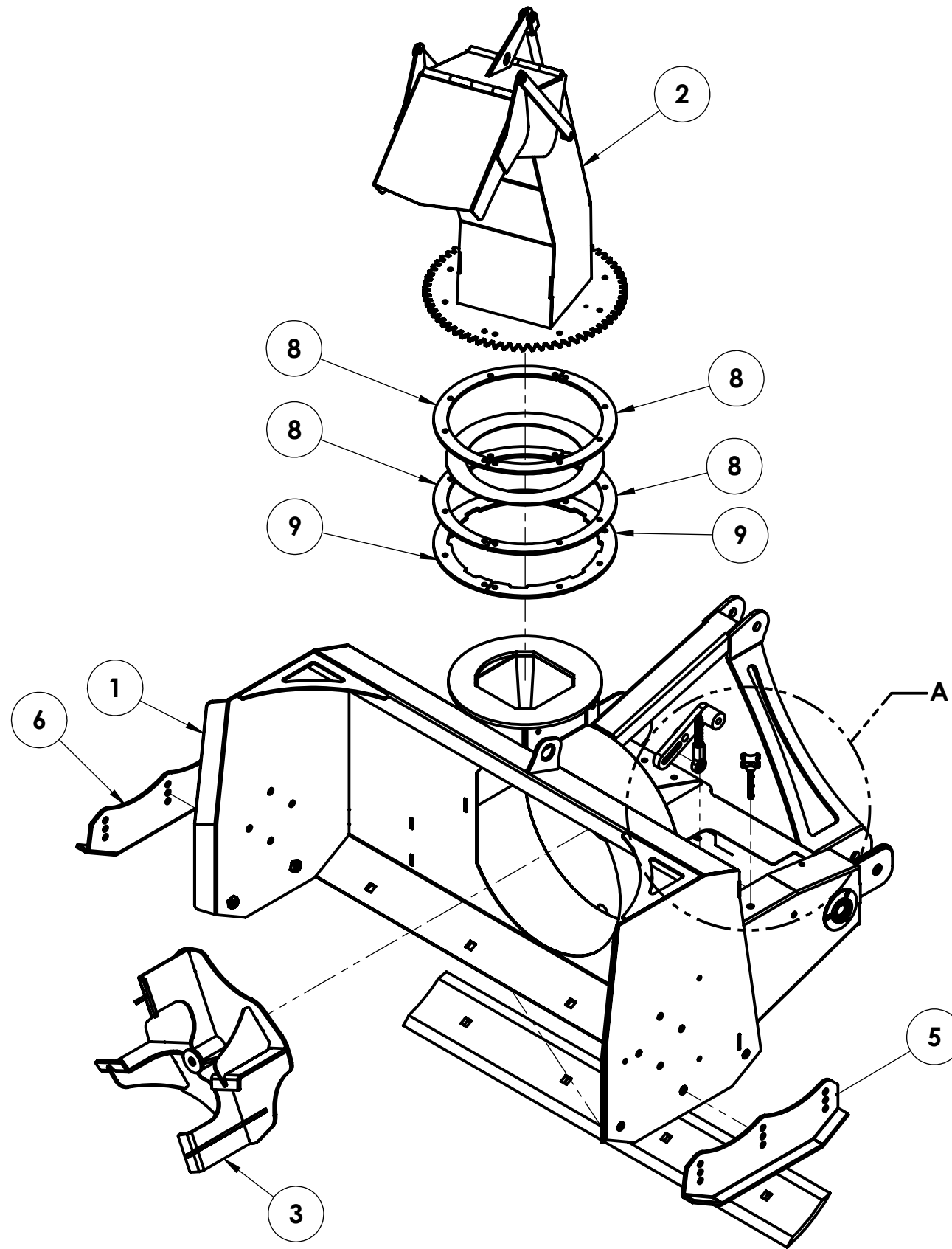
C

B

B

A

A



DETAIL A
SCALE 1 : 4

STREAMSIDE INDUSTRIES 4181 Boomer Line, RR#1 St. Clements, Ontario NOB 2M0		<i>ELECTRONIC SIGNATURE DOCUMENT</i> APPROVAL STATUS: RELEASED TO PRODUCTION	
<small>UNLESS OTHERWISE SPECIFIED DIM & TOL PER ASME Y14.5M-1994 DIMENSION ARE IN INCHES DECIMAL TOLERANCE</small>		<small>TITLE</small> 46" BLOWER ASSY	
<small>ANGULAR TOLERANCE ±1° DRAFT ANGLE 2° MAX MACHINED SURFACE FILLET & CORNER RADII .03 DO NOT SCALE DRAWING</small>		<small>SCALE</small> 1:12 <small>WEIGHT</small> 490.69 <small>SHEET</small> 3 OF 5	
<small>DRAWN BY:</small> R. KALOCSAI <small>DATE:</small> 01/07/2017		<small>SIZE</small> B <small>PART NO.</small> 46-40A100 <small>DWG NO.</small> 46-40A100 <small>REV</small> A	
<small>THIRD ANGLE PROJECTION</small> INCHES			

4

3

2

1

4

3

2

1

D

D

C

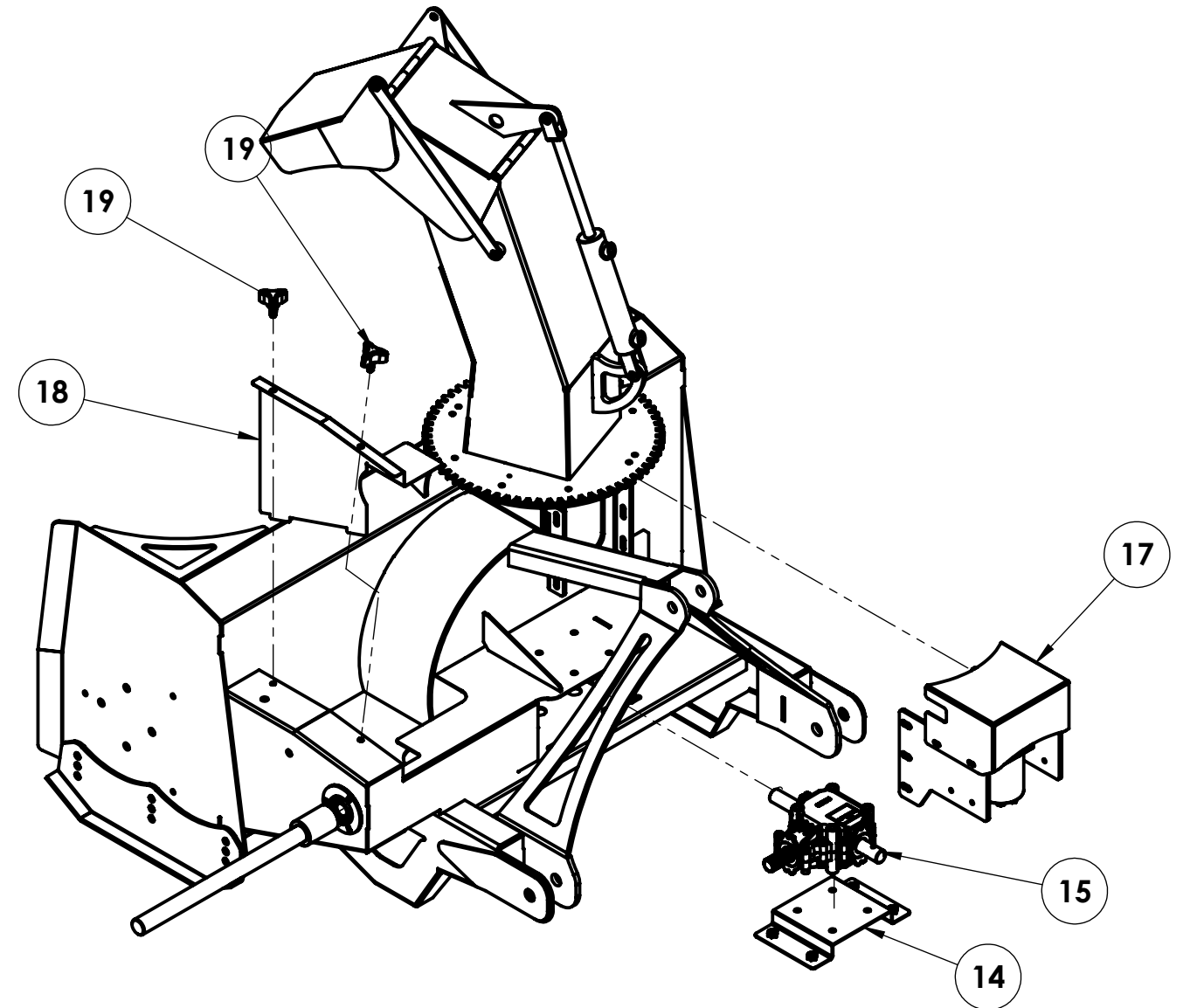
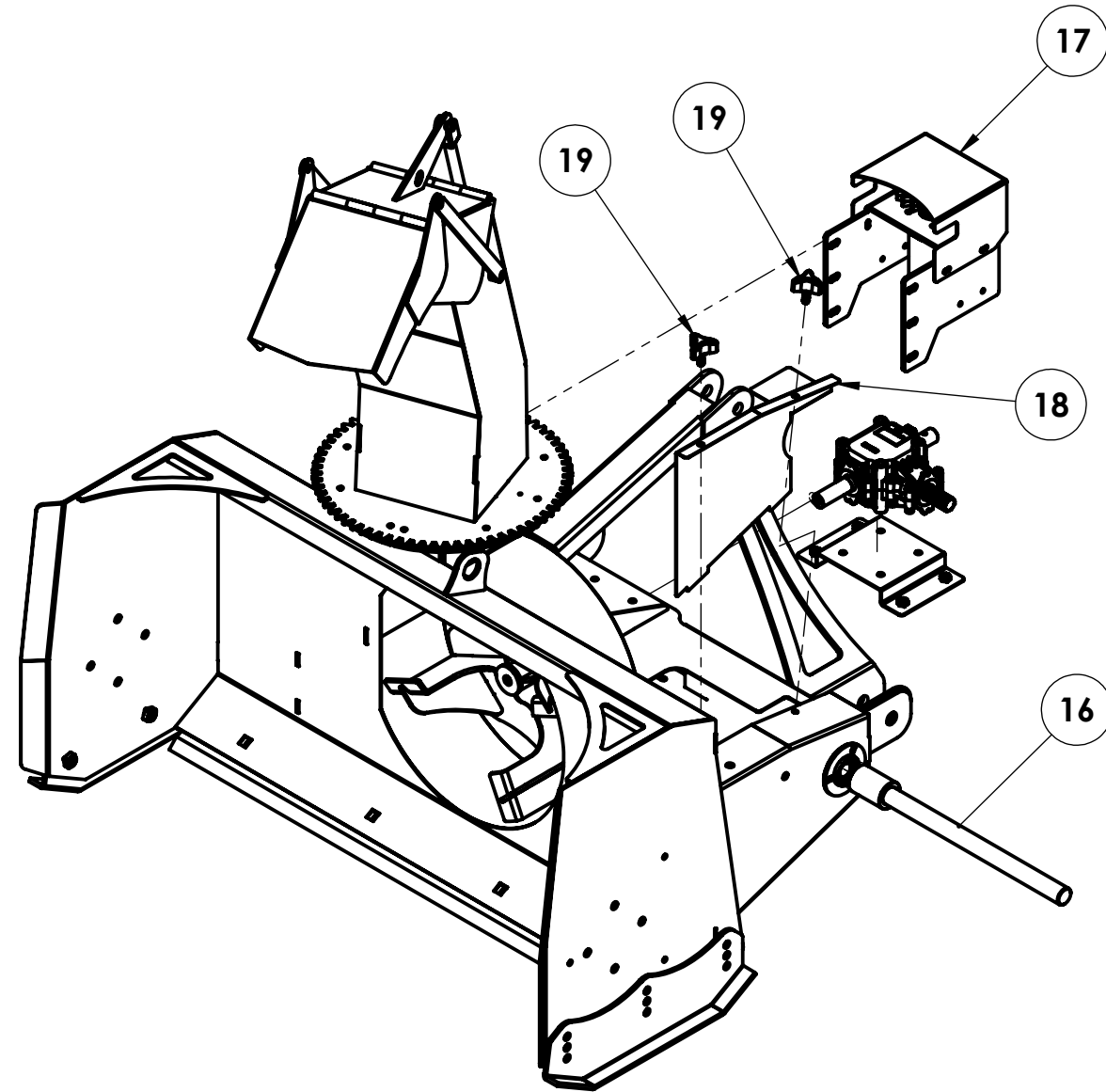
C

B

B

A

A



STREAMSIDE INDUSTRIES
 4181 Boomer Line, RR#1
 St. Clements, Ontario
 NOB 2M0

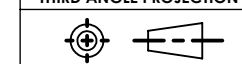
ELECTRONIC SIGNATURE DOCUMENT

APPROVAL STATUS: *RELEASED TO PRODUCTION*

UNLESS OTHERWISE SPECIFIED
 DIM & TOL PER ASME Y14.5M-1994
 DIMENSION ARE IN INCHES
 DECIMAL TOLERANCE .X ±.1
 .XX ±.01
 .XXX ±.005
 ANGULAR TOLERANCE ±1°
 DRAFT ANGLE 2° MAX
 MACHINED SURFACE
 FILLET & CORNER RADII .03
 DO NOT SCALE DRAWING

DRAWN BY: **R. KALOCSAI** DATE: **01/07/2017**

THIRD ANGLE PROJECTION



INCHES

TITLE

46" BLOWER ASSY

SIZE B	PART NO. 46-40A100	DWG NO. 46-40A100	REV A
SCALE 1:12	WEIGHT 490.69	SHEET 4 OF 5	

4

3

2

1

4

3

2

1

D

D

C

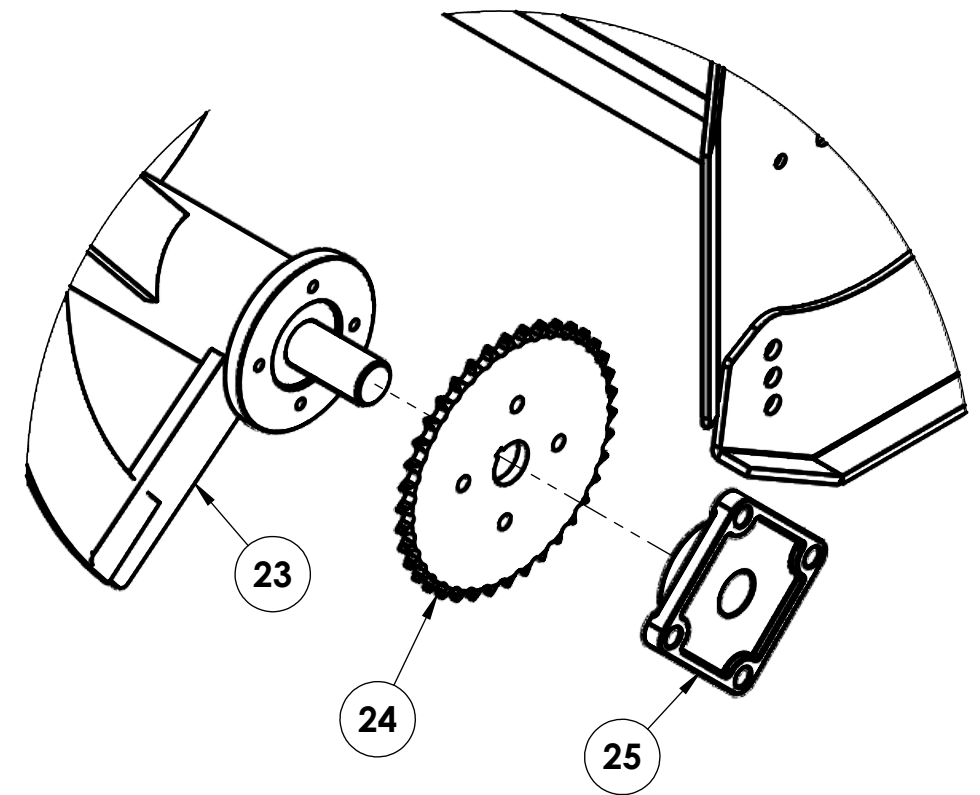
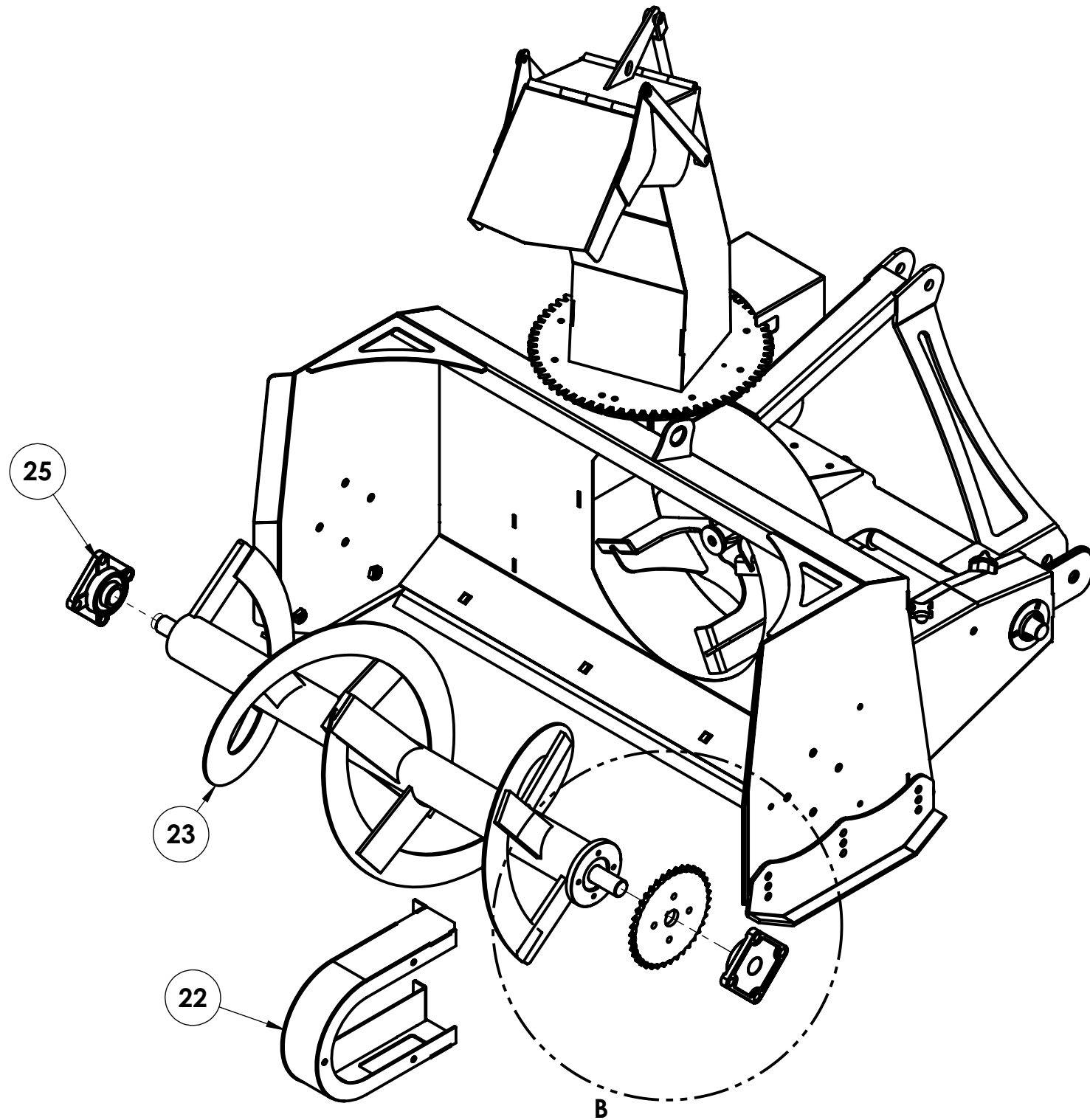
C

B

B

A

A



DETAIL B
SCALE 1 : 5

STREAMSIDE INDUSTRIES
4181 Boomer Line, RR#1
St. Clements, Ontario
NOB 2M0

ELECTRONIC SIGNATURE DOCUMENT

APPROVAL STATUS: **RELEASED TO PRODUCTION**

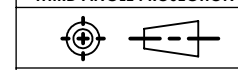
TITLE

46" BLOWER ASSY

UNLESS OTHERWISE SPECIFIED
DIM & TOL PER ASME Y14.5M-1994
DIMENSION ARE IN INCHES
DECIMAL TOLERANCE
.X ±.1
.XX ±.01
.XXX ±.005
ANGULAR TOLERANCE ±1°
DRAFT ANGLE 2° MAX
MACHINED SURFACE
FILLET & CORNER RADII .03
DO NOT SCALE DRAWING

DRAWN BY: **R. KALOCSAI** DATE: **01/07/2017**

THIRD ANGLE PROJECTION



INCHES

SIZE B	PART NO. 46-40A100	DWG NO. 46-40A100	REV A
SCALE 1:10	WEIGHT 490.69	SHEET 5 OF 5	

4

3

2

1