

4

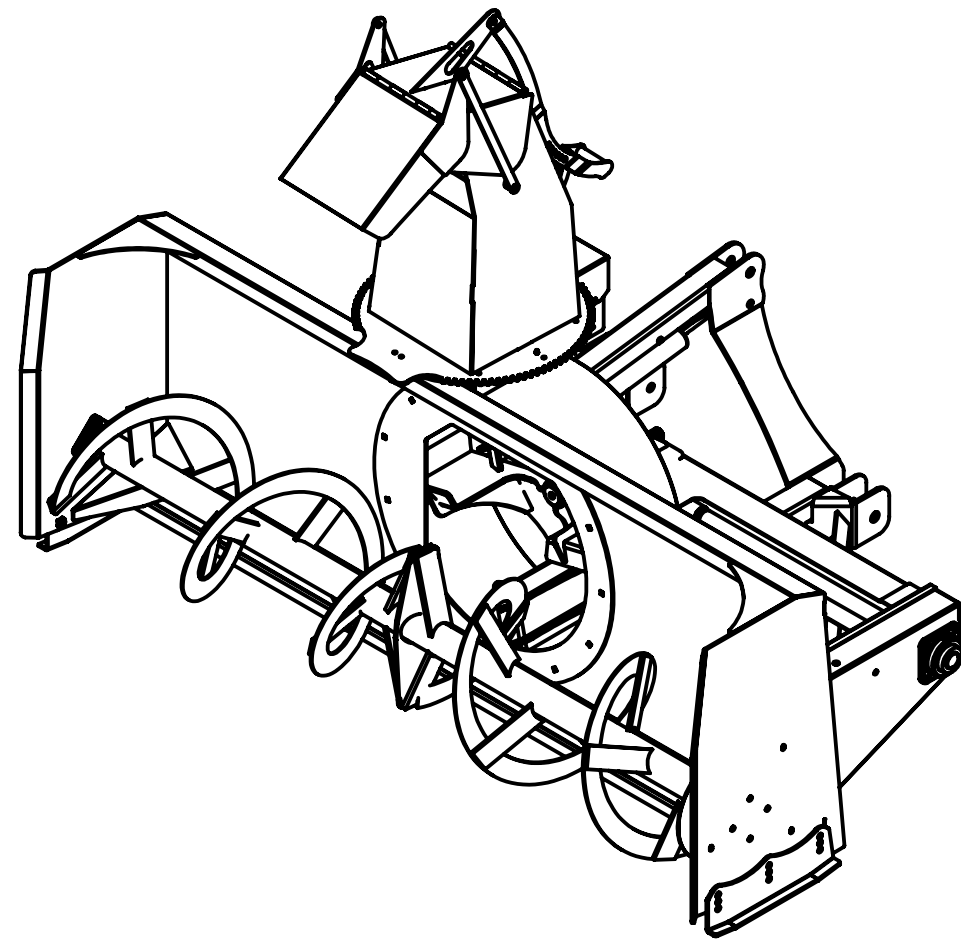
3

2

1

NOTES

- 1. MATERIAL: PER SUB-PARTS
- 2. BREAK SHARP EDGES AND REMOVE BURRS DETRIMENTAL TO SAFE HANDLING
- 3. PART TO BE FREE OF FOREIGN MATERIAL FIBERS, LOOSE BURRS, SHARP EDGES, CONTAMINANTS AND CORROSION.
- 4. FINISH: PARTS TO BE CLEANED, DEGREASED AND PRETREATED WITH IRON PHOSPHATE COATING PRIOR TO POWDER COATING  
POWDERCOAT SUPPLIER:  
COLOUR:  
PART TO MEET ADHESION STANDARD ASTM D3359, LEVEL 4B OR BETTER  
POWDERCOAT THICKNESS: 1.5-4 MIL  
PROTECT ALL THREADS PRIOR TO POWDER COATING
- 5. PARTS TO BE WELDED/ASSEMBLED AND WELD NUTS INSTALLED PER MANUFACTURER'S SPECIFICATIONS



REVISION HISTORY

REV	SHT	ZONE	REASON FOR CHANGE	DATE MM/DD/YYYY	BY	CHECKED
A	1 OF 5	N/A	PRODUCTION RELEASE	09/10/2016	R. KALOCSAI	A. MARTIN

ITEM NO.	PART NUMBER	DESCRIPTION	QTY.
1	96-70W101	MAIN FRAME	1
2	SB-60A100	CHUTE ASSEMBLY	1
3	SB-70W102	BLOWER FAN	1
4	96-70S102	102" BLADE	1
5	SB-60A175	TENSIONER BAR ASSY	1
6	SB-70L233	FAN HOUSING BACKING PLATE	1
7	SB-60L143	SKID PLATE RS	1
8	SB-60L142	SKID PLATE LS	1
9	SB-60L209	HOOD MOUNT	4
10	SB-60L210	HOOD RETAINER	2
11	SB-60S103	PLASTIC HOOD BEARING	1
12	5967K89	DRIVE SHAFT BEARING	1
13	96-70W103	DRIVE SHAFT ASSY	1
14	SBM-P-Gear Box	GEARBOX	1
15	SB-60A101	HYDR MOTOR, CHUTE ASSY	1
16	SB-70W150	CHAIN GUARD	1
17	96-70W114	AUGER WELDMENT	1
18	SBM-P-Drive Chain 96	ROLLER CHAIN	1
19	SBM-P-F207 BEARING	F207 BEARING & FLANGE	2
20	80HA30x1.5		1
21	SB-0001	Manuel Tube	1

**STREAMSIDE INDUSTRIES**  
 4181 Boomer Line, RR#1  
 St. Clements, Ontario  
 NOB 2M0

ELECTRONIC SIGNATURE DOCUMENT

APPROVAL STATUS: **RELEASED TO PRODUCTION**

TITLE

96" SNOW BLOWER

UNLESS OTHERWISE SPECIFIED  
 DIM & TOL PER ASME Y14.5M-1994  
 DIMENSION ARE IN INCHES  
 DECIMAL TOLERANCE .X ±.1  
 .XX ±.01  
 .XXX ±.005

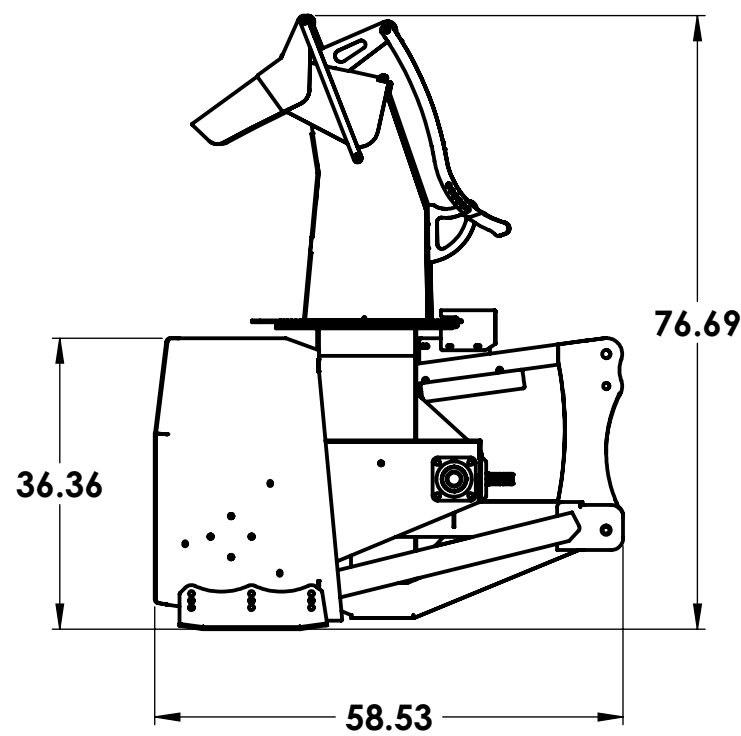
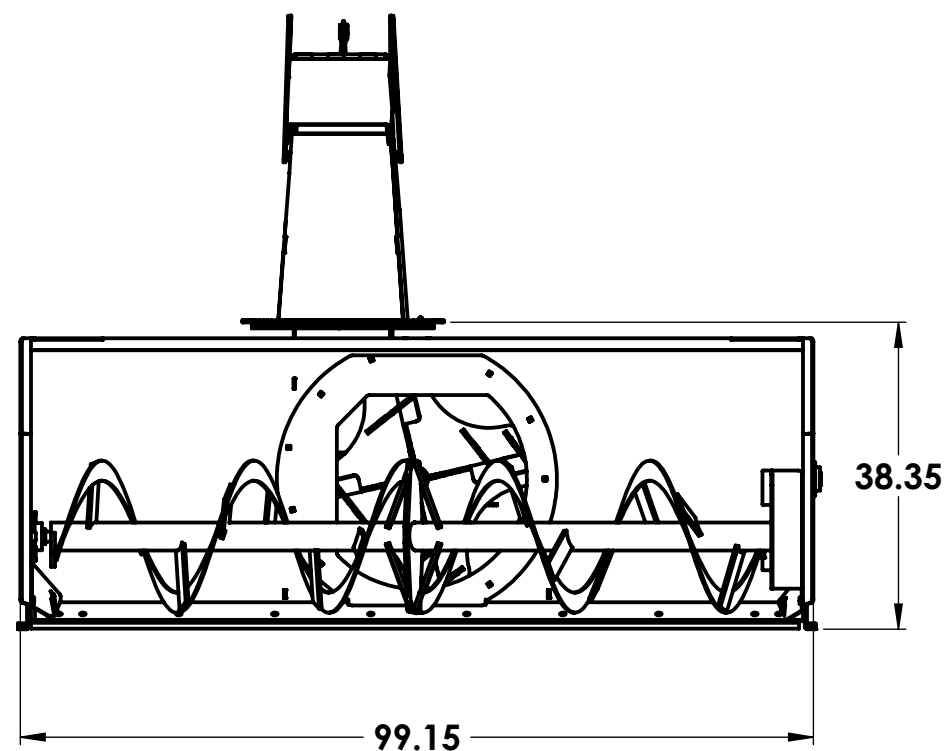
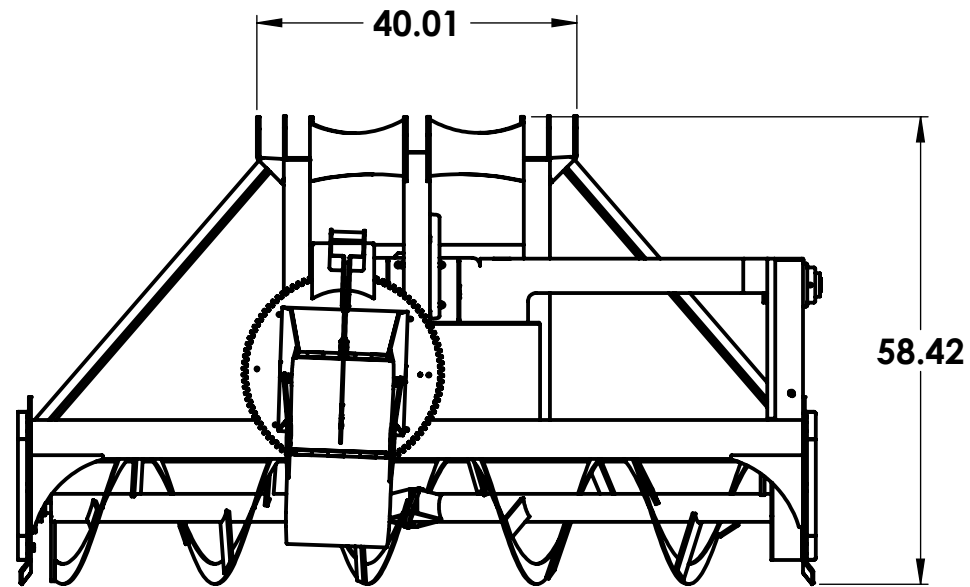
ANGULAR TOLERANCE ±1°  
 DRAFT ANGLE 2° MAX  
 MACHINED SURFACE  
 FILLET & CORNER RADII .03  
 DO NOT SCALE DRAWING

DRAWN BY: R. KALOCSAI DATE: 09/10/2016

THIRD ANGLE PROJECTION

**INCHES**

SIZE	PART NO.	DWG NO.	REV
B	96-70A100	96-70A100	A
SCALE	1:20	WEIGHT	1238.544
			SHEET 1 OF 5



<b>STREAMSIDE INDUSTRIES</b> 4181 Boomer Line, RR#1 St. Clements, Ontario NOB 2M0		<i>ELECTRONIC SIGNATURE DOCUMENT</i> <b>APPROVAL STATUS: RELEASED TO PRODUCTION</b>	
<small>UNLESS OTHERWISE SPECIFIED          DIM &amp; TOL PER ASME Y14.5M-1994          DIMENSION ARE IN INCHES          DECIMAL TOLERANCE</small>		<small>TITLE</small> <b>96" SNOW BLOWER</b>	
<small>ANGULAR TOLERANCE ±1°          DRAFT ANGLE 2° MAX          MACHINED SURFACE          FILLET &amp; CORNER RADII .03          DO NOT SCALE DRAWING</small>		<small>SCALE 1:24 WEIGHT 1238.544 SHEET 2 OF 5</small>	
<small>DRAWN BY: R. KALOCSAI DATE: 09/10/2016</small>		<small>SIZE B PART NO. 96-70A100 DWG NO. 96-70A100 REV A</small>	
<small>THIRD ANGLE PROJECTION</small> 		<small>INCHES</small>	

4

3

2

1

D

D

C

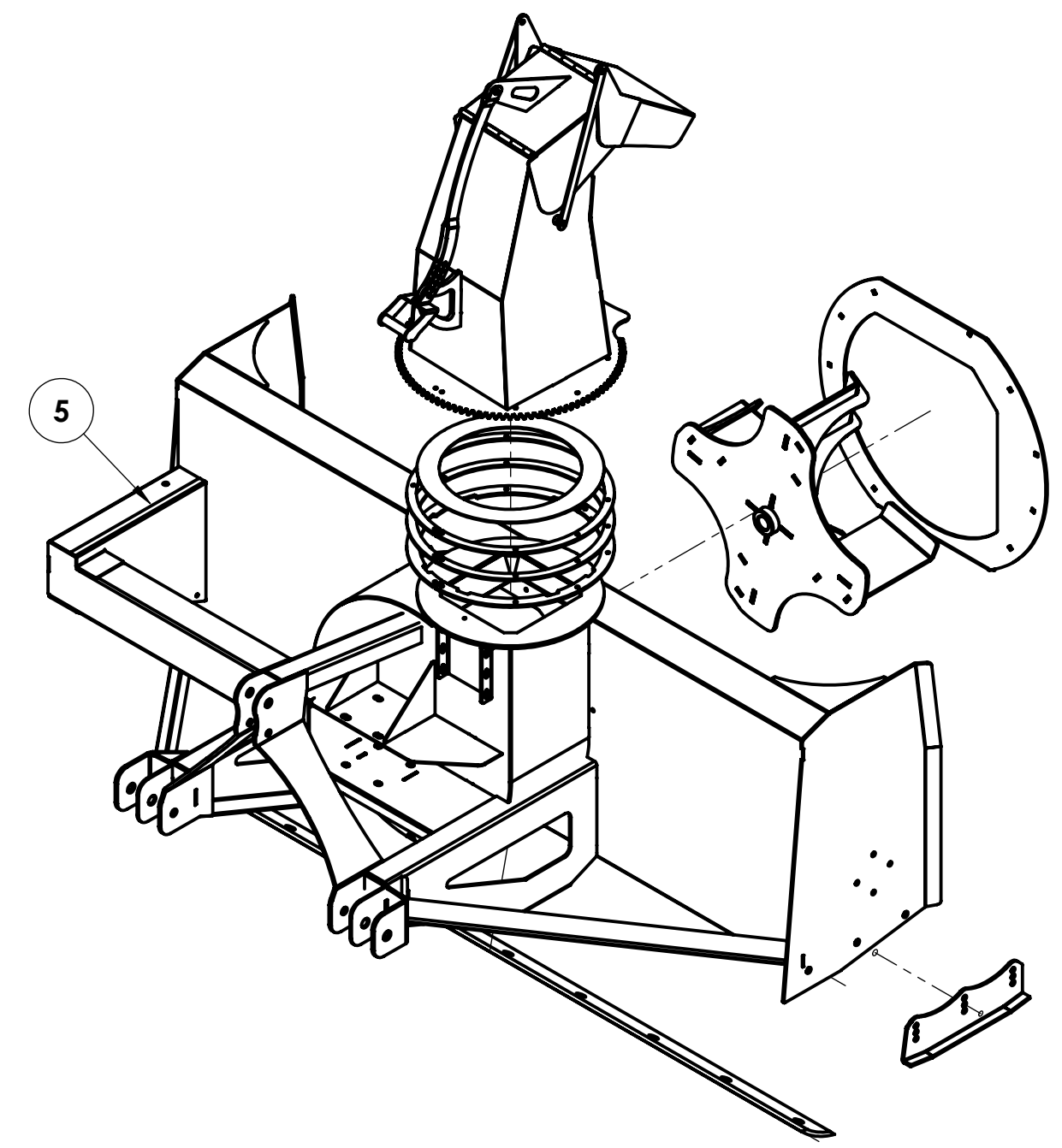
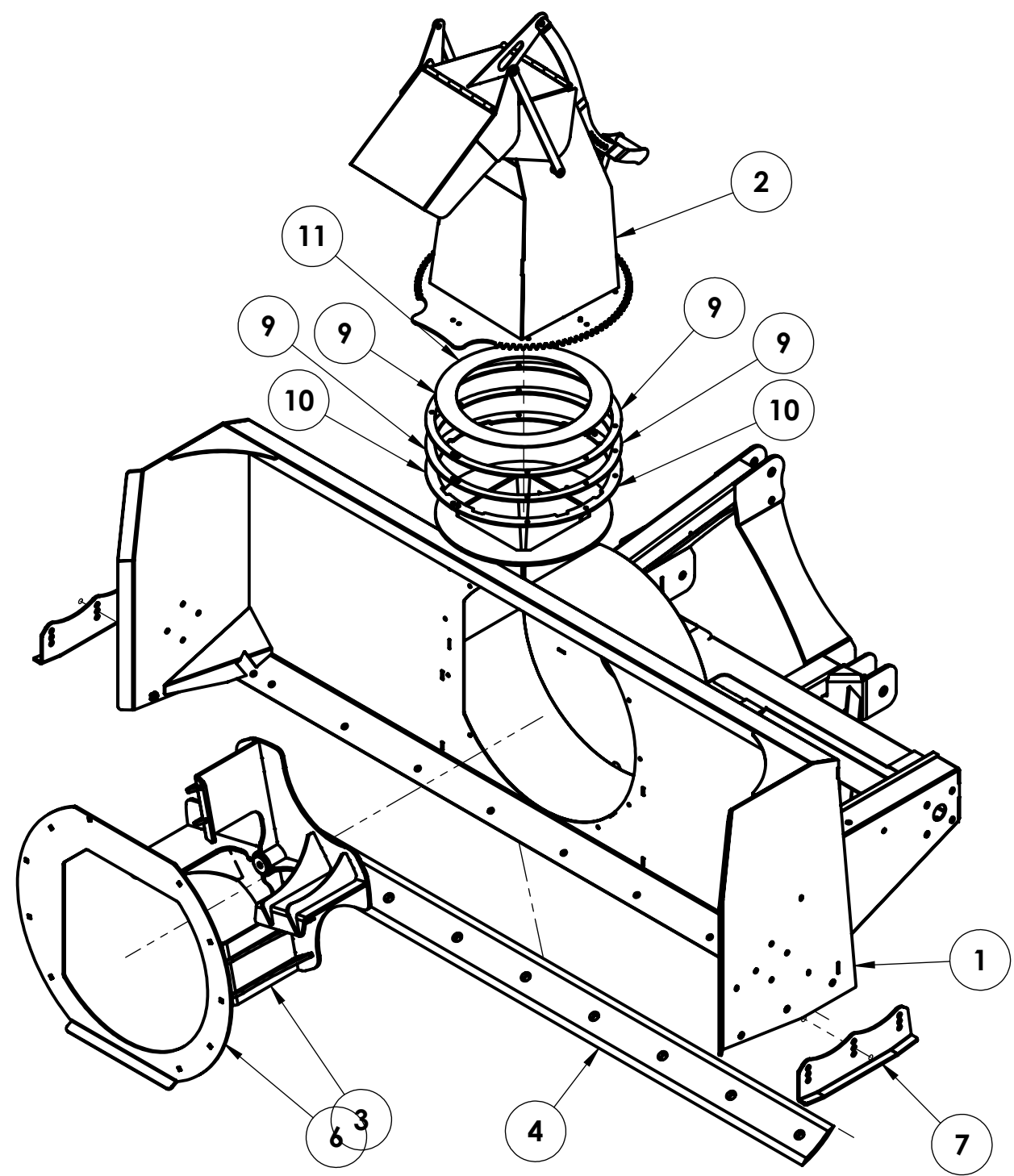
C

B

B

A

A



COMPONENTS ARE HIDDEN IN SOME VIEWS FOR CLARITY

<b>STREAMSIDE INDUSTRIES</b> 4181 Boomer Line, RR#1 St. Clements, Ontario NOB 2M0		<i>ELECTRONIC SIGNATURE DOCUMENT</i> <b>APPROVAL STATUS: RELEASED TO PRODUCTION</b>	
<small>UNLESS OTHERWISE SPECIFIED          DIM &amp; TOL PER ASME Y14.5M-1994          DIMENSION ARE IN INCHES          DECIMAL TOLERANCE</small>		<small>TITLE</small> <b>96" SNOW BLOWER</b>	
<small>ANGULAR TOLERANCE ±1°          DRAFT ANGLE 2° MAX          MACHINED SURFACE          FILLET &amp; CORNER RADII .03          DO NOT SCALE DRAWING</small>		<small>SCALE</small> 1:18 <small>WEIGHT</small> 1238.544 <small>SHEET 3 OF 5</small>	
<small>DRAWN BY:</small> R. KALOCSAI <small>DATE:</small> 09/10/2016		<small>SIZE</small> <b>B</b> <small>PART NO.</small> <b>96-70A100</b> <small>DWG NO.</small> <b>96-70A100</b> <small>REV</small> <b>A</b>	
<small>THIRD ANGLE PROJECTION</small> 		<small>INCHES</small>	

4

3

2

1

4

3

2

1

D

D

C

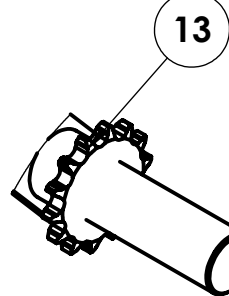
C

B

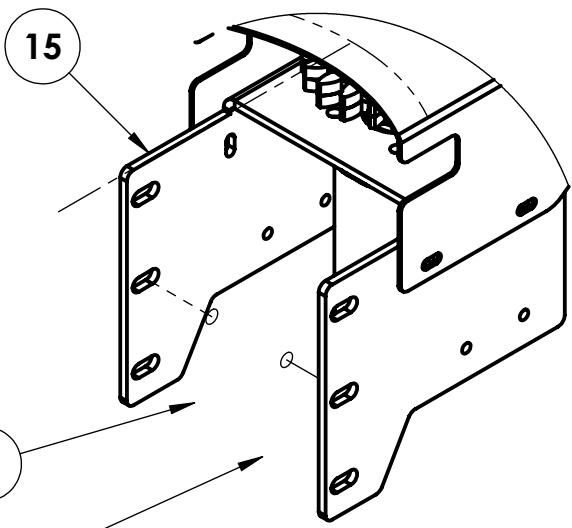
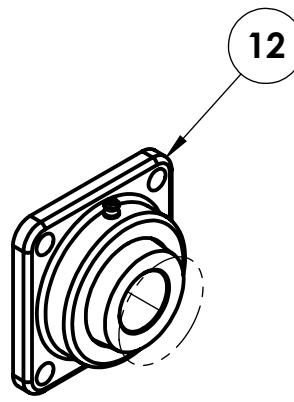
B

A

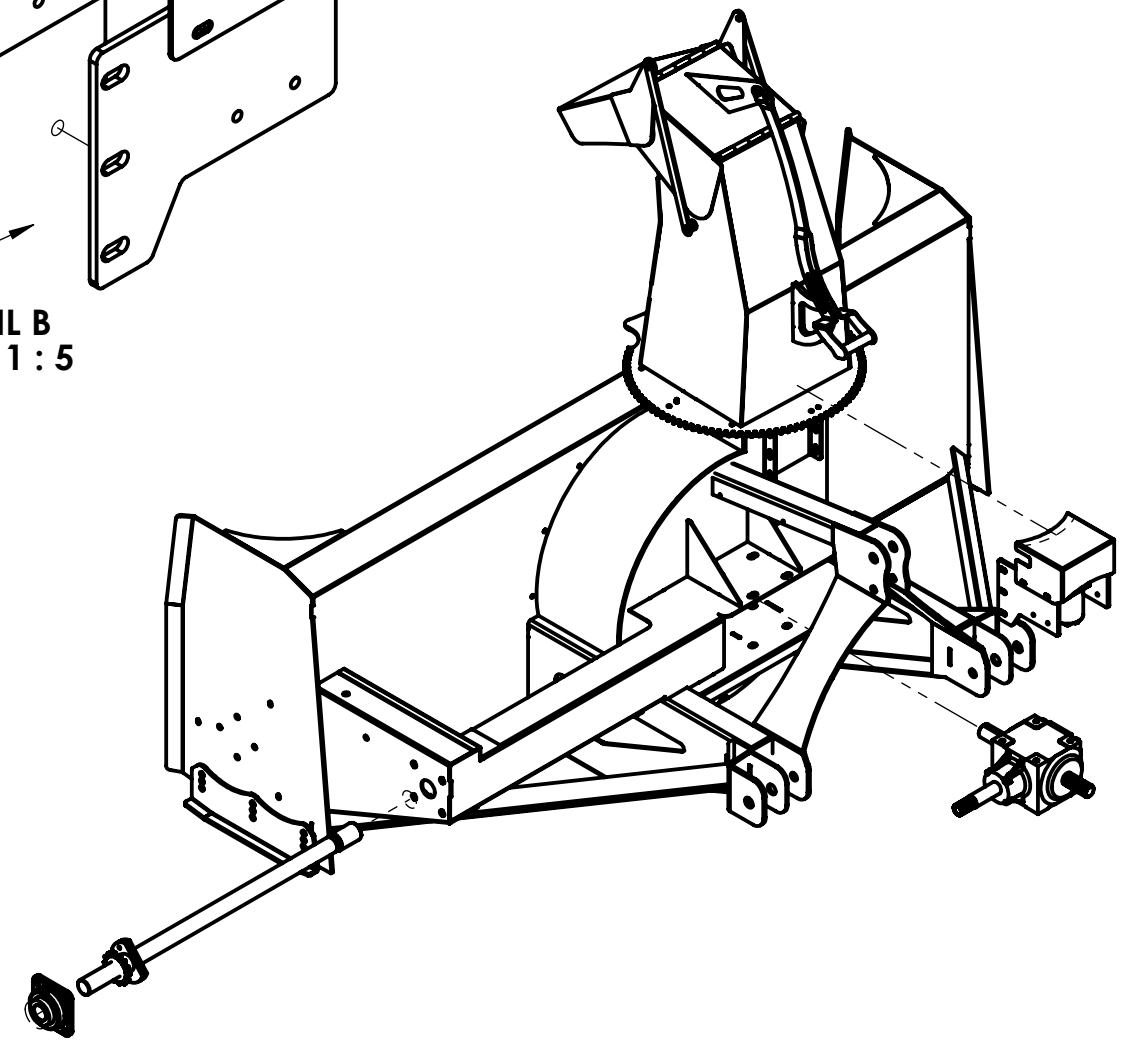
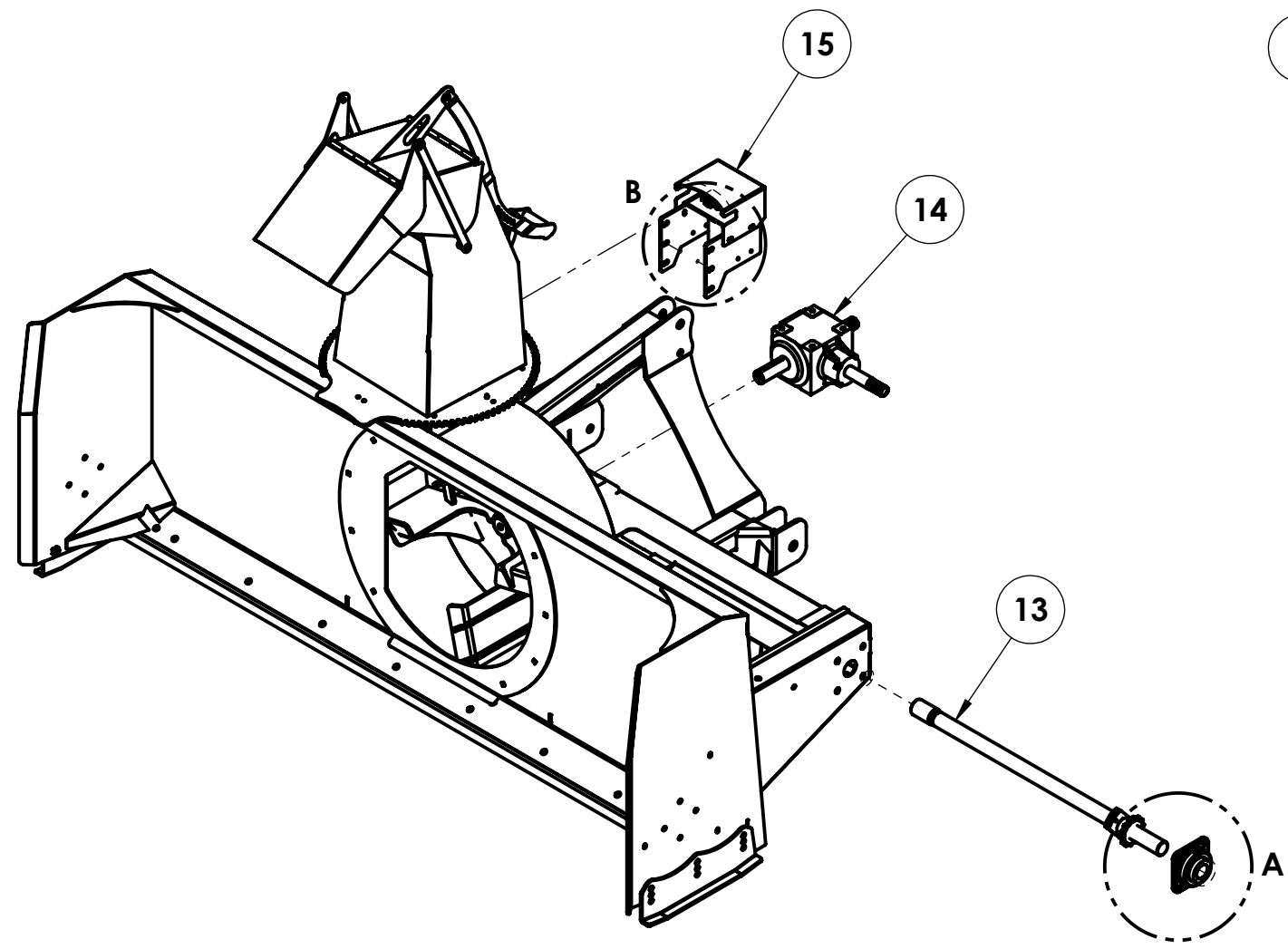
A



DETAIL A  
SCALE 1 : 5



DETAIL B  
SCALE 1 : 5



<b>STREAMSIDE INDUSTRIES</b> 4181 Boomer Line, RR#1 St. Clements, Ontario NOB 2M0		<i>ELECTRONIC SIGNATURE DOCUMENT</i> <b>APPROVAL STATUS: RELEASED TO PRODUCTION</b>	
<small>UNLESS OTHERWISE SPECIFIED          DIM &amp; TOL PER ASME Y14.5M-1994          DIMENSION ARE IN INCHES          DECIMAL TOLERANCE</small>		<small>TITLE</small> <b>96" SNOW BLOWER</b>	
<small>ANGULAR TOLERANCE ±1°          DRAFT ANGLE 2° MAX          MACHINED SURFACE          FILLET &amp; CORNER RADII .03          DO NOT SCALE DRAWING</small>		<small>SCALE 1:20</small>	
<small>DRAWN BY:  <b>R. KALOCSAI</b></small>		<small>DATE:  <b>09/10/2016</b></small>	
<small>THIRD ANGLE PROJECTION</small> 		<small>SIZE</small> <b>B</b>	
<b>INCHES</b>		<small>PART NO.</small> <b>96-70A100</b>	
<small>DO NOT SCALE DRAWING</small>		<small>DWG NO.</small> <b>96-70A100</b>	
<small>WEIGHT</small> 1238.544		<small>REV</small> <b>A</b>	
<small>SHEET 4 OF 5</small>		<small>REVISIONS</small>	

4

3

2

1

4

3

2

1

D

D

C

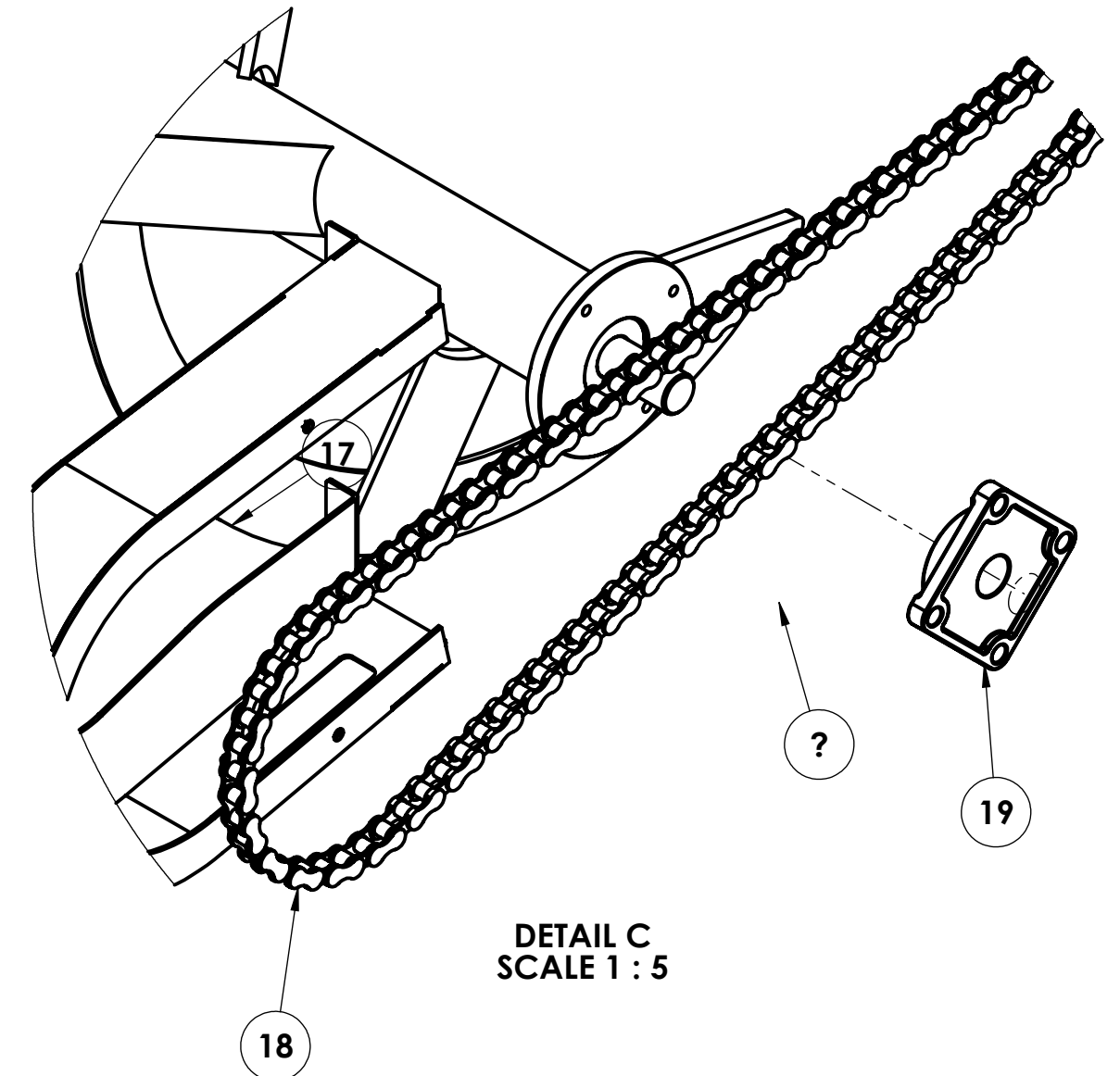
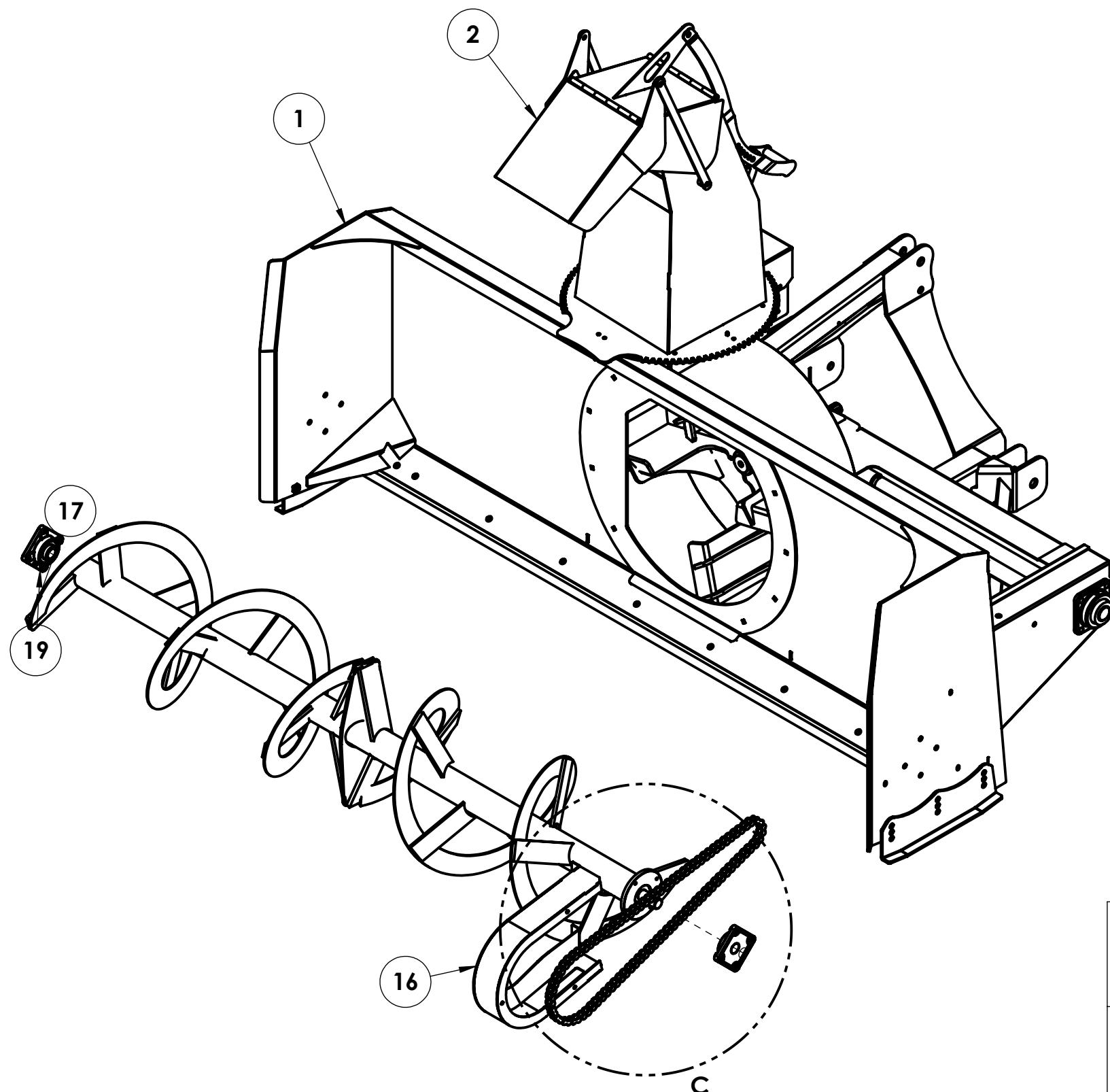
C

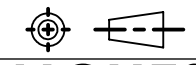
B

B

A

A



<b>STREAMSIDE INDUSTRIES</b> 4181 Boomer Line, RR#1 St. Clements, Ontario NOB 2M0		<i>ELECTRONIC SIGNATURE DOCUMENT</i> <b>APPROVAL STATUS: <i>RELEASED TO PRODUCTION</i></b>	
<small>UNLESS OTHERWISE SPECIFIED          DIM &amp; TOL PER ASME Y14.5M-1994          DIMENSION ARE IN INCHES          DECIMAL TOLERANCE</small>		<small>DRAWN BY: R. KALOCSAI    DATE: 09/10/2016</small>	
<small>ANGULAR TOLERANCE ±1°          DRAFT ANGLE 2° MAX          MACHINED SURFACE          FILLET &amp; CORNER RADII .03          DO NOT SCALE DRAWING</small>		<small>THIRD ANGLE PROJECTION</small>  <b>INCHES</b>	
<small>SIZE</small> <b>B</b>	<small>PART NO.</small> <b>96-70A100</b>	<small>DWG NO.</small> <b>96-70A100</b>	<small>REV</small> <b>A</b>
<small>SCALE</small> 1:15	<small>WEIGHT</small> 1238.544	<small>SHEET 5 OF 5</small>	

4

3

2

1